

12.14.2023 - SITE PLAN REVIEW
2ND SUBMISSION

HOTEL AT 101 S. OCEAN BLVD

A NEW PROPOSED DEVELOPMENT BY CLARIDGE HOMES

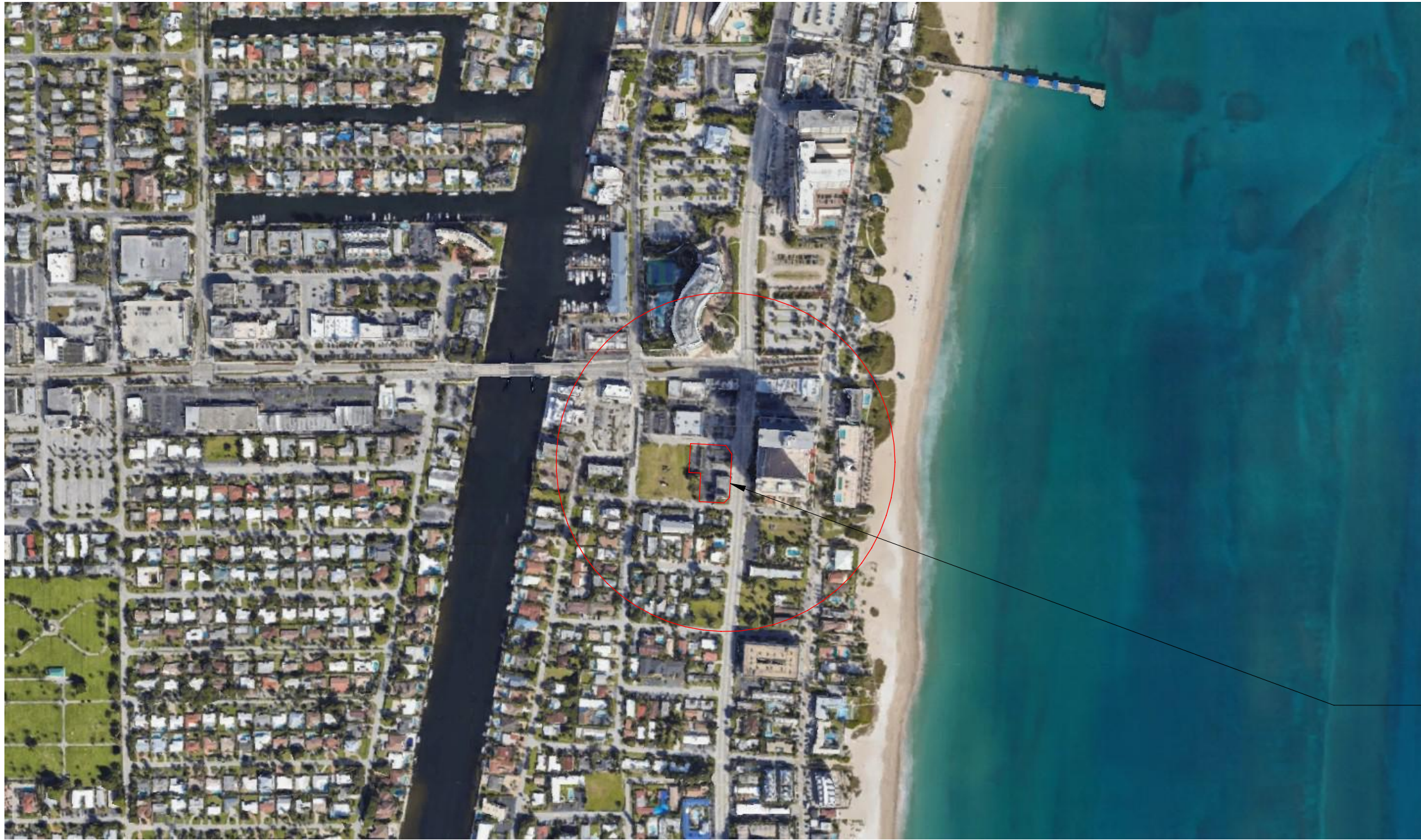
DEVELOPER
CLARIDGE HOMES
210 Gladstone Ave
Ottawa, On - K2P 0Y6
613.233.6030

ARCHITECT
FSMY ARCHITECTS
888 South Andrews Avenue
Fort Lauderdale, FL 33316
954.764.6575

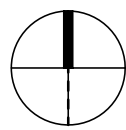
CIVIL ENGINEER
BOTEK THURLOW ENGINEERING, INC.
3409 NW 9th Avenue, Suite 1102
Fort Lauderdale, FL 33309
954.568.0888

LANDSCAPE ARCHITECT
BARRANCO - RLA, INC.
888 S. ANDREWS AVE, SUITE 300
Fort Lauderdale, FL 33316
954.667.7814

LAND USE ATTORNEY
LOCHRIE & CHAKAS, P.A.
1404 EAST BROWARD BLVD, SUITE 303
Fort Lauderdale, FL 33301
954.779.1117



AERIAL CIRCLE DENOTES 700 FOOT RADIUS



SITE



| | | | |
|--------------|-----------------------------|------------|-----------------------------------|
| ARCHITECTURE | | AR-501 | PHOTOMETRIC GROUND FLOOR PLAN |
| AR-000 | COVER SHEET | AR-502 | PHOTOMETRIC SECOND FLOOR PLAN |
| AR-001 | SURVEY | AR-503 | PHOTOMETRIC THIRD FLOOR PLAN |
| AR-002 | PLAT MAP | AR-504 | PHOTOMETRIC FOURTH FLOOR PLAN |
| AR-100 | SITE PLAN | | |
| AR-101 | GROUND FLOOR PLAN | CIVIL | |
| AR-102 | LEVEL 2 | C-1 | PAVING AND GRADING PLAN |
| AR-103 | LEVEL 3 | C-2 | WATER AND SANITARY SEWER PLAN |
| AR-104 | LEVEL 4 | C-3 | WATER AND SANITARY SEWER DETAILS |
| AR-105 | TYPICAL HOTEL PLAN | C-4 | WATER AND SANITARY SEWER DETAILS |
| AR-106 | POOLDECK LEVEL | C-5 | WATER AND SANITARY SEWER DETAILS |
| AR-107 | BALL ROOM LEVEL | C-6 | WATER AND SANITARY SEWER DETAILS |
| AR-108 | ROOF PLAN | C-7 | WATER AND SANITARY SEWER DETAILS |
| AR-200 | MATERIALS | LANDSCAPE | |
| AR-201 | EXTERIOR ELEVATION | L-0.1 | LANDSCAPE INDEX |
| AR-202 | EXTERIOR ELEVATION | L-1.0 | TREE DISPOSITION |
| AR-203 | EXTERIOR ELEVATION | L-2.0 | LANDSCAPE PLAN |
| AR-204 | EXTERIOR ELEVATION | L-2.1 | LANDSCAPE SPECIFICATION AND NOTES |
| AR-301 | SITE VICINITY | L-3.0 | LANDSCAPE DETAILS |
| AR-302 | CPTD SAFETY & SECURITY PLAN | L-3.1 | LANDSCAPE DETAILS |
| AR-401 | RENDERINGS | IRRIGATION | |
| AR-402 | RENDERINGS | IR-1.0 | IRRIGATION PLAN |
| AR-403 | RENDERINGS | IR-5.0 | IRRIGATION DETAILS |
| AR-404 | RENDERINGS | | |
| AR-405 | RENDERINGS | | |
| AR-406 | RENDERINGS | | |

| | | |
|----------|-------|---------|
| DESIGNED | DRAWN | CHECKED |
| NH | NH | JY |

REVISIONS

| | |
|-----------|-------|
| DATE: | COMM: |
| 9.27.2023 | 23008 |

POMPAÑO HOTEL

101 S. OCEAN BLVD
POMPAÑO BEACH, FL 33062

COVER SHEET

DRC SET

AR-000

DRC
PZ23-12000042
02/07/2024

12/15/2023 4:25:57 PM